



VAMPIRE



WEREWOLF



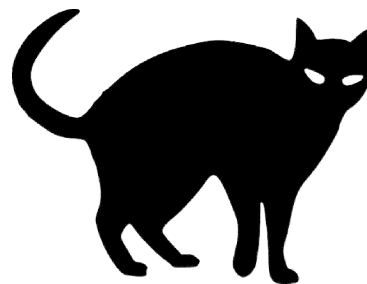
CLOWN



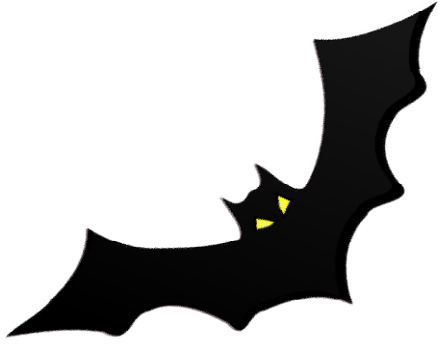
WITCH



JACK O'
LANTERN



CAT



BAT



SKELETON



MONSTER



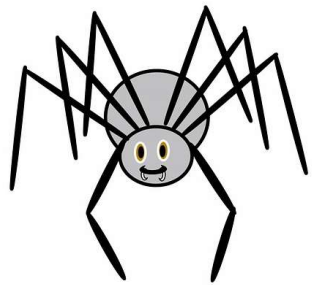
ZOMBIE



BROOM



GHOST



SPIDER



CANDIES



HAUNTED
HOUSE



TRICK
OR
TREAT



PUMPKIN



CAULDRON